





Review

Matrescence: lifetime impact of motherhood on cognition and the brain

Edwina R. Orchard ^{1,2,4,5,6,@,*} Helena J.V. Rutherford ^{1,4} Avram J. Holmes ^{2,5} and Sharna D. Jamadar ^{3,6}

Profound environmental, hormonal, and neurobiological changes mark the transition to motherhood as a major biosocial life event. Despite the ubiquity of motherhood, the enduring impact of caregiving on cognition and the brain across the lifespan is not well characterized and represents a unique window of opportunity to investigate human neural and cognitive development. By integrating insights from the human and animal maternal brain literatures with theories of cognitive ageing, we outline a framework for understanding maternal neural and cognitive changes across the lifespan. We suggest that the increased cognitive load of motherhood provides an initial challenge during the peripartum period, requiring continuous adaptation; yet when these demands are sustained across the lifespan, they result in increased late-life cognitive reserve.

Motherhood as a neurocognitive developmental stage

The hormonal fluctuations of pregnancy, birth, and lactation initiate rapid and extreme physiological transformations that are unparalleled across the lifespan. These biological changes are accompanied by a dynamic restructuring of the physical, emotional, and social environment. In concert with these adaptations, the maternal brain undergoes significant structural and functional neuroplasticity [1,2] as well as cognitive adaptations [3] across the **peripartum period** (see [Glossary](#)). The brain is transformed, in preparation for and in response to, a developing child. These neural adaptations enable mothers to manage the new and demanding tasks of motherhood and the development of strong bonds with their child (see [4–9] for recent reviews). Appropriate and sensitive maternal behaviors support child development and play a crucial role in establishing the wellbeing of the next generation. Reflecting the importance of the maternal influence on developing children, existing maternal brain studies tend to be infant-centric, rather than parent-centric, focusing on mothers' neural and behavioral responses to infant cues, but overlooking the impact of motherhood on mothers themselves. Furthermore, the literature describing parental neurocognition tends to focus on birthing mothers ([Box 1](#)).

Profound biological and environmental changes mark the transition to motherhood as a major life event, reflecting an important developmental life stage for new mothers. Just as the hormonal and psychological changes of adolescence prepare a person for successful adulthood, **matrescence** is a time when the brain and body prepare for the transition to motherhood. These two life stages are characterized by shifting social roles, with adulthood marking the social transition from dependence to independence, and motherhood marking the transition to now supporting one's own dependents.

In addition to hormonal and social similarities, changes to the maternal brain across pregnancy are morphologically similar to those occurring in adolescence, with one study showing comparable changes in gyrification, sulcal depth, and sulcal length across adolescence and matrescence [10]. The neuroplasticity of matrescence similarly constitutes a sensitive neurodevelopmental

Highlights

The maternal brain undergoes significant structural and functional neuroplasticity as well as cognitive adaptations during the peripartum period, which are long-lasting and present throughout the lifespan.

The novel challenges of the postpartum period involve increased responsibilities, resulting in an increased cognitive load for new mothers. This cognitive load is increased across the lifespan and dynamically adjusted as the needs of the child grow and change.

Long-term exposure to a more complex environment is beneficial for the brains of humans and animals, suggesting that increases in environmental complexity in motherhood may result in increased cognitive reserve in late-life.

¹Yale Child Study Center, School of Medicine, Yale University, New Haven, CT, USA

²Department of Psychology, Faculty of Arts and Sciences, Yale University, New Haven, CT, USA

³Turner Institute of Brain and Mental Health & Monash Biomedical Imaging, Monash University, Melbourne, Australia

⁴<https://www.thebabl.net/>

⁵<https://holmeslab.yale.edu/>

⁶<https://www.sharnajamadar.com>

*Correspondence: edwina.orchard@yale.edu (E.R. Orchard).
©Twitter: @OrchardWinnie (E.R. Orchard).

Box 1. Birthing and nonbirthing parents

Parenthood is an identity with both biologically and socially determined dimensions, describing a person's caregiving relationship to a child, with or without a biological relationship. Indeed, the term *matrescence* was coined by the anthropologist Dana Raphael as 'the process of becoming a mother – a developmental passage where a woman transitions, through pre-conception, pregnancy and birth, surrogacy, or adoption to the postnatal period and beyond' [120]. From a social perspective, it may be more appropriate to define parents as mother, father, or parent based on how they identify with these terms, which may more closely align with gender identity (e.g., woman, man, non-binary), rather than sex (e.g., male, female, intersex), or gestational relationship (e.g., birth-giving, non-birth-giving).

In the field of parental neuroscience, the vast majority of research in this area has studied people whose gender and parental identity align with their sex. In other words, the maternal brain has been assumed to be female/woman and the paternal brain has been assumed to be male/man. This reflects the discipline's links with the preclinical literature, the 'biological' focus of many of the studies, as well as the societal norms when the studies were conducted. As such, here we use the terms 'mother' and 'father' accordingly. As we learn more about the distinctions between gender, sex, and parental experiences, and how these dimensions interact, these terms and norms may change. It may not be possible to fully disentangle the strictly biological from the strictly social dimensions of human parenthood.

Importantly, nonbirthing parents, particularly those with young infants, are exposed to the environment of parenthood and the experience of caregiving. All parents are required to adapt to this environment and display novel caregiving behaviors. The isolated impact of caregiving has been shown in female virgin rodents exposed to pups [40,121], suggesting that the caregiving environment alone can induce beneficial neural and cognitive changes in new parents. In the only study in human nonbirthing mothers, foster mothers showed positive associations between oxytocin levels, and the quality of their maternal bond, and their brain response to their infant's cues, similar to those of biological mothers [122]. However, no study to date has examined cognitive changes across the transition to parenthood for females who become parents without being pregnant and giving birth, or in people whose gender may not match their sex, representing a clear gap in the literature.

period, where the brain is primed to readily acquire experience-dependent skills and knowledge. While the developmental changes of childhood, adolescence, and ageing are the subject of intense study, the impact of motherhood as a life stage in humans remains poorly understood.

Characterizing 'typical' neural and cognitive development across the transition to motherhood, as well as deviations from normative processes, has implications for how we conceptualize maternal neurocognitive trajectories, both in early motherhood and throughout the lifespan. Until recently, the prevailing rhetoric has been that the physiological and, by extension, neural changes of pregnancy, birth, and lactation fully resolve in the **postpartum period**. In other words, it is believed that as sex steroid hormones return to prepregnancy levels, women return to a prepregnancy state in body and mind. Critically, while the biological changes may resolve over time, the environmental and behavioral changes of motherhood are likely to continue throughout the lifespan. However, the longer-term and cumulative impacts of motherhood are not well characterized.

Here, we propose a framework for investigating cognition in motherhood, relevant for understanding both the initial changes across the peripartum period and the enduring impacts of motherhood across the lifespan (Figure 1, Key figure). We review maternal cognition across the peripartum period, using a neurodevelopmental framework to explain cognitive decrements in pregnancy [3], postpartum cognitive renormalization [11,12], and potential cognitive improvements in middle and late life. Specifically, we suggest that the increased environmental complexity of motherhood provides a cognitive challenge in early motherhood and results in increased **cognitive reserve** in late life.

Early motherhood and cognition

Approximately 80% of new mothers report subjective experiences of cognitive decline across the transition to motherhood [3]. These self-reported declines span a range of cognitive domains, including impaired memory, concentration, and absentmindedness [3,13]. Using neuropsychological assessments and cognitive tasks, many studies have also found objective cognitive

Glossary

Cognitive reserve: the brain's ability to cope with damage, illness, or cognitive decline by recruiting pre-existing cognitive processes.

Enriched environment: animal housing conditions that consist of enhanced sensory, cognitive, motor, or social stimulation.

Executive function: a set of higher-level cognitive processes, including working memory, inhibitory control, and set-shifting, which allow the control of behavior and emotion and facilitate goal attainment.

Matrescence: the transition to motherhood.

Multiparous: a person who has been pregnant or given birth more than once. This term can also be used to describe a multiple pregnancy (e.g., twins, triplets).

Nulliparous: a person who has never been pregnant or given birth.

Parity: the number of children a person has parented.

Peripartum period: pregnancy and the first 6–8 weeks postpartum.

Postpartum period: the time following birth, also called the postnatal period.

There is little consensus as to the length of time included in the postpartum period, with some defining postpartum as the 6–8 weeks following birth and some up to the first 6 months, aligning with the resumption of menstruation and cessation of breastfeeding.

Primiparous: a person who has been pregnant or given birth to one child.

Key figure

Reframing matrescence as a neurocognitive developmental stage in humans

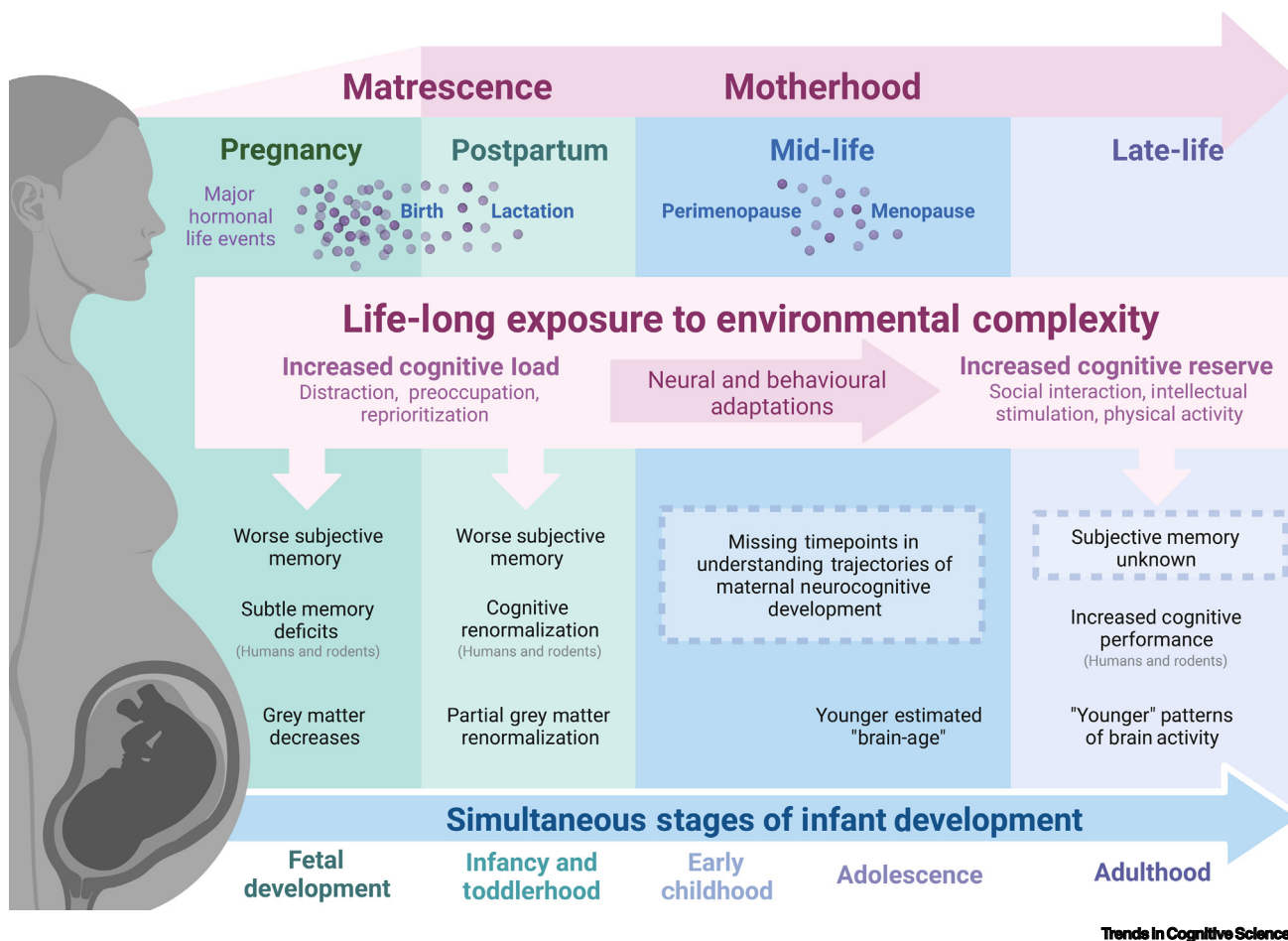


Figure 1. The transition to motherhood is associated with hormonal, neural, and cognitive changes both in the short-term (pregnancy and the postpartum period) and in the long-term (mid and late life). Motherhood is also marked by dynamic and stage-specific exposure to increased environmental complexity. This increased environmental complexity may explain both cognitive challenges in the peripartum period and cognitive improvements with increased parity in middle and late life. Neural and cognitive changes across the maternal lifespan also likely interact with the major hormonal events of pregnancy, birth, lactation, perimenopause, and menopause, as well as the simultaneous stages of infant development. The influence of these interacting factors requires further investigation.

decrements, in addition to self-reported memory decrements during pregnancy [13–19]. Three meta-analyses have synthesized the evidence for cognitive changes across pregnancy [3,20,21], revealing consistent memory decrements, strongest in the third trimester [3]. This is consistent with the rodent literature suggesting a cognitive decrement in the final week of pregnancy (equivalent to the third trimester of human pregnancy) [22–24]. In humans, these decrements are subtle and remain within the normative range of general cognitive functioning and memory [3,25]. As such, while cognitive decrements may be salient to pregnant people themselves as a change from their own prepregnancy baseline, they are unlikely to significantly disrupt daily life [3,25].

Unlike in pregnancy, where subjective cognitive decrements are found together with objective measures, postpartum mothers consistently report poorer memory [14,18,19,26,27] in the absence of cognitive differences [12]. Overall, the evidence for no cognitive decrement in motherhood [12,14,17–19,26,28–37] outweighs that showing significant differences [27,38,39]. This discrepancy suggests that mothers consistently report subjective memory impairments without measurable decrements in objective performance. Figure 2 shows a detailed breakdown of studies investigating cognition in the postpartum period. See Box 2 for a discussion of the potential impacts of sleep, mood, and **nulliparous** control groups on these effects.

Trajectory of cognitive renormalization

A cognitive renormalization trajectory appears to occur in both rodent and human mothers, with initial cognitive decrements in late pregnancy and the early postpartum, followed by cognitive recovery, and even some cognitive improvements at the time of weaning. Compared with virgin females, maternal rats show impaired spatial memory in late pregnancy and the early postpartum period [22,24] and improved memory performance [40–45], social learning [46], and reduced anxiety and stress [47,48], after weaning. Collectively, these results suggest that rodent mothers experience some cognitive deficits in late pregnancy and the early postpartum, but that these decrements are resolved and that cognition may even become enhanced following weaning and into the late postpartum period. The emerging human matrescence literature also indicates a similar cognitive trajectory. The few studies that do show cognitive decrements in the postpartum examine mothers at 3–8 months postpartum [27,38,39,49]. Conversely, studies reporting cognitive improvements examine mothers a year or more after giving birth [34,35,50], consistent with common timelines for weaning in human mothers.

The timing of this cognitive trajectory is also consistent with neuroplasticity in the maternal brain. Importantly for understanding cognition, the hippocampus, a brain region crucial for memory ability, shows dramatic restructuring across the peripartum period in both humans and rodents. For example, in rats, hippocampal neurogenesis is decreased during the early postpartum period [51], followed by increased hippocampal long-term potentiation and improved hippocampal-dependent memory following weaning [45], aligning with the cognitive trajectory in maternal rodents [23,24]. Similarly, in humans, the hippocampus shows reductions in grey matter across pregnancy [1] and subsequent increases in the postpartum period [1,52]. Altered hippocampal structure and function are potentially related to changes in maternal cognition across pregnancy [3], however, the associations between neural and cognitive adaptations have not been conclusively shown. Therefore, care must be taken when extrapolating neural outcomes to cognitive changes, and vice versa, and when speculating about causal or mechanistic associations. Additionally, lower hippocampal volume at 4 months postpartum is associated with positive mother–child interactions [53], suggesting hippocampal changes have broad implications in maternal caregiving behavior, beyond cognition. In addition to maternal brain changes, many biological, psychosocial, and environmental transitions occur in concert, which likely have simultaneous and interacting impacts on maternal cognition across the peripartum period.

Biological factors

Hormonal fluctuations have been commonly cited as the causal factor for cognitive changes during the transition to motherhood [17,54]. Levels of estrogens and progesterone, which increase during pregnancy and drop dramatically following birth, have been implicated in memory function outside of the context of pregnancy and motherhood. Like in other sensitive periods of hormonal fluctuation (e.g., adolescence [55]), neuroplasticity across pregnancy may come at an initial cost to memory, with benefits emerging longer-term, perhaps representing the reprioritization of crucial information (e.g., infant-related) or cognitive domains (e.g., social cognition) [20].

	N	Time Postpartum	Direction of Results	Cognitive Domain(s)		Parity	Sleep	Mood
				Significant Difference	No Significant Difference			
Cross-Sectional Studies								
Eidelman et al. (1993)	100 Postpartum, 20 Controls	3 days	<i>n.s.</i>	-	Verbal Memory Visuospatial Memory	Multiparous Mothers, Nulliparous Controls	N	N
Swain et al. (1997)	30 Postpartum, 28 Controls	3 weeks	<i>n.s.</i>	-	Memory Attention Psychomotor Speed	Mothers Not Stated, Parous Controls	Y	Y
Parsons et al. (2004)	7 Primiparous, 9 Multiparous	1 month	Multiparous> Primiparous	Verbal Memory	Verbal Fluency Trail-Making Comprehension Semantic Memory Attention Executive Control Visuospatial Skill Non-Verbal IQ	7 Primiparous, 9 Multiparous	N	Y
Almanza-Sepulveda et al. (2018)	27 Postpartum, 25 Controls	2-6 months	Controls>Postpartum	Spatial Working Memory	Executive Function	Not Stated	N	Y
Janes et al., (1999)	20 Postpartum, 20 Controls	0-12 months	Controls>Postpartum	Working Memory	Implicit Memory Explicit Memory	Primiparous Mothers, Nulliparous Controls	Y	Y
Casey et al. (1999)	44 Postpartum, 23 Controls	0-12 months (n=22), >12months (n=22)	<i>n.s.</i>	-	Implicit Memory Explicit Memory Semantic Memory Short-Term Memory Prospective Memory	Mothers Not Stated, Nulliparous Controls	Y	Y
Orchard et al. (2021)	43 Postpartum, 43 Controls	12 months	<i>n.s.</i>	-	Verbal Memory Short-Term Memory Working Memory Processing Speed Theory of Mind	Primiparous Mothers, Nulliparous Controls	Y	Y
Pownall et al. (2021)	102 Pregnant 126 Postpartum 136 Controls	0-2 years	Postpartum and Controls> Pregnant Controls> Pregnant and Postpartum	Verbal Memory Verbal Memory	-	Primiparous Pregnant Women, Nulliparous Controls, Postpartum Not Stated	N	N
Miller et al. (2020)	36 Postpartum, 62 Controls	3.5 years	Postpartum>Controls Controls>Postpartum	Executive Control Accuracy Reaction Time	Alerting Disengaging Moving + Engaging Orienting	Mothers Not Stated, Nulliparous Controls	Y	N
Longitudinal Studies								
Stark (2000)	56 Mothers	1 week	Postpartum>Pregnancy	Divided Attention	Working Memory Short-Term Memory Directed Attention Mental Effort	89.5% Primiparous, 10.5% Multiparous	N	Y
Harris et al. (1996)	20 Postpartum, 20 Controls	1 month	<i>n.s.</i>	-	Executive Function Attention Logical Memory Processing Speed Psychomotor Speed	Not Stated	N	Y
Hoekzema et al. (2017)	25 Postpartum, 20 Controls	2.5 months	<i>n.s.</i>	-	Verbal Memory Working Memory Reaction Time	Primiparous Mothers, Nulliparous Controls	N	Y
Rutherford & Anderson (2020)	25 Postpartum, 25 Controls	3 months	<i>n.s.</i>	-	Verbal IQ Non-Verbal IQ Full-Scale IQ	Primiparous Mothers, Nulliparous Controls	Y	N
Glynn (2010)	254 Postpartum, 48 Controls	3 months	Controls>Postpartum	Verbal Memory	Working Memory Facial Recognition	Mothers: 44% Primiparous, 56% Multiparous, Controls: 42% Nulliparous, 58% Parous	N	N
Henry & Sherwin (2012)	55 Postpartum, 21 Controls	3 months	Controls>Postpartum	Verbal Memory Executive Function	Paragraph Recall Spatial Ability Attention	Primiparous Mothers, Nulliparous Controls	Y	Y
Farrar et al. (2014)	23 Postpartum, 24 Controls	3 months	Control>Postpartum	Spatial Recognition	Working Memory Divided Attention Perceptual Matching	Mothers: 39% Primiparous, 61% Multiparous, Controls: 46% Nulliparous, 54% Parous	N	Y
Logan et al. (2014)	21 Postpartum, 21 Controls	3-6 months	<i>n.s.</i>	-	Verbal Learning Working Memory Cognitive Control Visuospatial Memory Processing Speed	Mothers Not Stated, Nulliparous Controls	N	Y
Casey (2000)	28 Mothers, 24 Controls	2-8 months	<i>n.s.</i>	-	Vocabulary Short-Term Memory Working Memory Semantic Memory Abstract Reasoning	Not Stated	Y	Y
de Groot et al. (2006)	57 Postpartum, 50 Controls	8 months	Controls>Postpartum	Verbal Memory Information Processing	Processing Speed	Mothers: 40% Primiparous, 60% Multiparous, Controls: 30% Nulliparous, 70% Parous	N	N
Miekes et al. (2009)	37 Mothers	3-12 months	Postpartum>Pregnancy	Verbal Memory	Recognition Memory	Not Stated	N	N
Crawley et al. (2003)	25 Mothers, 10 Controls	10-13 months	<i>n.s.</i>	-	Verbal Memory Focused Attention Divided Attention	Mothers: 36% Primiparous, 64% Multiparous, Controls: 50% Nulliparous, 50% Parous	N	N
Rendell & Henry (2008)	15 Mothers	13 months	Postpartum>Pregnancy	Naturalistic Prospective Memory Attention Psychomotor Speed	-	Mothers: 70% Primiparous, 30% Multiparous, Controls: 70% Nulliparous, 30% Parous	Y	N
Buckwalter et al. (2001)	11 Mothers	2 years	Postpartum>Pregnancy	Attention Psychomotor Speed	IQ Visual Perception	Not Stated	Y	Y
Christensen et al. (2010)	188 Postpartum, 542 Controls	Not Stated	<i>n.s.</i>	-	Verbal Memory Working Memory Processing Speed	Primiparous Mothers, Nulliparous Controls	Y	Y
Keenan et al. (1998)	10 Postpartum, 10 Controls	Not Stated	<i>n.s.</i>	-	Implicit Memory Explicit Memory	Mothers Not Stated, Non-Pregnant Controls	Y	Y

Trends in Cognitive Sciences

(See figure legend at the bottom of the next page.)

However, studies linking pregnancy hormones and cognition have not convincingly shown a causal association [25,54,56]. During late pregnancy and the first postpartum weeks, memory performance does not appear to correlate with levels of estradiol, progesterone, testosterone, cortisol, or dehydroepiandrosterone [57]. Similarly, no association has been found between levels of oxytocin and cognitive performance in women tested during pregnancy and at 3 months postpartum [54]. The few studies that have measured cognitive performance and hormone levels suggest that hormone exposure may not correlate with cognitive performance in pregnancy and the postpartum period [25,56].

Psychosocial factors

In addition to extreme biological changes, the transition to motherhood contains dramatic environmental and psychosocial changes, which may also contribute to cognitive decrements in pregnancy. The emotional adjustment required to prepare for a new baby's arrival leads many expectant mothers to be preoccupied with this major life transition [58]. This preoccupation may account for the self-reported memory deficits in pregnancy, as attention is shifted away from information and tasks unrelated to motherhood [13]. Pregnancy can also be accompanied by additional stressors, including changing relationships, body image, adjustment to a new social role, and worry about labor and delivery [13,59]. The shift in attention, motivation, and priorities towards one's child may also account for objective cognitive decrements in pregnancy, with expectant mothers assigning laboratory testing a lower priority [60]. This is consistent with a dampened stress response to cognitive testing shown by pregnant women, where a certain amount of stress is required for optimal cognitive performance [20,61]. A recent study elegantly showed pregnancy-related improvements in hippocampal-dependent spatial associative memory [11]. Specifically, when compared with nulliparous control women, pregnant women in their third trimester showed both a general enhancement in learning and retention and a specific enhancement in memory of infant-related stimuli. This suggests both an increase in attention towards relevant stimuli as well as general improvements in hippocampal-dependent memory.

Environmental factors

In addition to the challenges of low mood and poor sleep, new mothers are expected to undertake more responsibilities. Simultaneously tackling these challenges means that new mothers experience increased cognitive load whilst operating with fewer emotional and physical resources. This increased cognitive load represents a cognitive challenge. For example, leaving the house with an infant requires mothers to remember a multitude of items (a favorite toy, a change of clothes, a bottle) and to flexibly organize plans around naps and feeding timings. Furthermore, these responsibilities emerge in addition to a mother's own personal needs and existing responsibilities. An increased cognitive load creates more opportunities to forget an item or task. Mothers may also develop a higher sensitivity to minor memory or concentration lapses, which would have otherwise been ignored or considered inconsequential before pregnancy. Continuous re-evaluation and heightened awareness of memory ability may also be amplified by the societal expectation of cognitive decline for mothers in some cultures [62], contributing to a confirmation bias. Importantly, whilst in many cultures mothers are expected to undertake the majority of these responsibilities, this increased cognitive load likely impacts parents of all genders who

Figure 2. Cognition in the postpartum period. Results from the literature describing cognitive changes and null results in postpartum mothers [1, 12, 17–19, 26–39, 49, 50, 56, 62, 66, 119]. Direction of results indicates which group or timepoint showed better performance; for example, 'Controls>postpartum' indicates superior performance in the control group, 'n.s.' indicates non-significance. The significant differences column indicates the cognitive domain(s) that showed significant effects. Significant effects that suggest cognitive improvement in the postpartum period are colored pink and those that suggest deficits are colored grey. 'No significant differences' indicates the cognitive domains that did not show significant effects, shown in blue. Sleep and Mood indicate whether a study has collected (Y) measures of sleep or mood, or not (N).

Box 2. Important methodological considerations

Mood and sleep

There is a link between mood and memory, such that higher levels of depression are associated with poorer memory performance [123]. People with depression are also more likely to self-report memory problems than people without depression [124], even after adjusting for objective cognitive performance [125]. A similar link exists between cognition and sleep, where poor sleep is associated with poorer cognitive performance and self-reported memory [126,127]. Given that mood disorders and sleep disturbance are common during pregnancy and the postpartum period, cognitive changes observed in the peripartum period may also be related to mood and sleep disturbance. Associations between subjective memory and disturbances in sleep and mood have been consistently demonstrated in the first year postpartum [12,18,19,26,29]. Some studies find that peripartum cognitive decrements disappear when including mood and sleep as covariates [128], or that cognitive differences are strongest in women with mood or sleep disturbance [129]. However, many studies of peripartum cognition do not report or account for sleep, depression, or anxiety outcomes and further research is essential to further understand these associations.

Never-pregnant controls

Many studies of cognition in motherhood share one large problem: the control group consists of women who are not currently pregnant/postpartum but who are mothers and have experienced a previous pregnancy. Studies in rodents [25,82] and humans [101,102] suggest that reproductive experience confers cognitive benefits that are long-lasting, perhaps even permanent. Motherhood may also offer a cumulative effect on cognition, with multiparous women outperforming primiparous postpartum women [56]. Cumulative cognitive improvements with increasing parity have also been found in rats [25,40,43]. Given the long-term and cumulative impact of motherhood on cognition, control groups consisting of never-pregnant women are critical to achieving reliable comparisons and meaningful results.

Richly phenotyped datasets

Openly available datasets represent a valuable resource for population neuroscience, where large sample sizes provide requisite statistical power and robustness. The majority of maternal brain studies beyond the postpartum period characterize middle-aged parental effects using data sourced from one dataset: the UK Biobank (a large sample of adults from the United Kingdom) [101,110–112]. These studies, and others [102,118], are novel and provide valuable insight about the long-term impacts of parenthood. However, sparse information about caregiving and the limited racial and ethnic diversity of these samples limits interpretability. Specially collected data is needed to further characterize long-term brain changes in human parenthood, with rich phenotyping of parental factors (e.g., involvement in childcare, hormone levels, grandparenthood).

Box 3. Cognitive and brain changes in early fatherhood

Compared with the already scarce literature describing neurocognitive changes across motherhood, even fewer studies investigate these adaptations in fathers. Only two studies have indirectly investigated cognition in early fatherhood. When comparing working memory in mothers and fathers longitudinally from pregnancy to 6 weeks postpartum, no differences between mothers and fathers were found at any timepoint, nor any change across time [130]. This study used fathers as a control group for practice effects and did not compare the cognitive performance of fathers to childless men. The other study found that fathers performed worse on a measure of logical memory the day following their child's birth, compared with nonpregnant control women, and interpreted this difference as related to fathers' stress and anxiety [30].

A handful of studies have examined changes to fathers' brain structure and function [102,118,131–133]. Similar to mothers, first time fathers show longitudinal reductions in grey matter volume after the birth of their child [133] and larger volume reductions in a subsample of these fathers were associated with stronger neural responses to pictures of their own child [134]. Additionally, longitudinal changes in paternal grey matter volume across the first 4 months postpartum are associated with sensitive paternal caregiving behavior [132]. Fathers who spend more time in direct childcare also show patterns of brain activation resembling maternal brain changes [131], consistent with the preclinical literature [40,135,136], showing that neural changes can arise environmentally, flexibly activated by exposure to offspring [2]. Whilst these neural adaptations appear to support the behaviors of paternal caregiving, the associations between neural and cognitive adaptations are unclear in human fathers. See recent reviews for more details on the neurobiological changes in fathers [137] and for neuroendocrine changes supporting paternal care [138,139].

The association between caregiving experience and enrichment is present in non-human fathers involved in the rearing of offspring. Paternal marmosets experience similar brain changes to animals living in enriched environments and this effect is mediated by the amount of father–infant contact [83]. Furthermore, the degree of neural adaptation is proportionate to the amount of time spent in primary care: exposure to unfamiliar pups for 10 minutes per day for 4 days is sufficient to induce neural changes and improve spatial memory for nonparental male rats [135]. Future research that includes nonbirthing parents of all sexes will allow the investigation of the enriched environment hypothesis, uncovering whether and to what degree cognitive and neural effects occur in the absence of pregnancy and the relative influence of endocrine and experiential factors.

share in the mental load of caregiving. However, our understanding of the impact of parenthood on fathers and nonbirthing mothers is far less established and requires increased attention (Box 3).

New parents may adapt to the cognitive challenges of the postpartum period by developing mechanisms, tools, or strategies for maintaining their cognitive abilities. One such adaptive change may be an increase in **executive functioning**, critical for adaptive maternal behavior in humans [63–65], including the capacity for self-regulation and managing competing demands [64]. Increased reliance on executive functioning may strengthen cognitive abilities, which could generalize beyond the caregiving context. Recent evidence suggests that compared with nulliparous controls, mothers show superior executive function and attention 3 years following birth [66]. Therefore, executive function is a cognitive domain, which is both important for understanding maternal care and may show improved ability over time. In addition to cognitive adaptations, mothers may also show neural compensation, where brain networks are activated in different ways, or additional neural mechanisms are recruited to support behavior [67]. This hypothesis is supported by studies of cognition and brain function in early motherhood [68,69,140], showing differences in resting-state and task-related brain activation in the absence of differences in task performance.

Sustained environmental complexity

Cognitive adaptation could be a mechanism for cognitive improvements in the postpartum period and beyond, as mothers continue to access advantageous adaptive and compensatory mechanisms. If so, the next question is when the benefits might begin to outweigh the challenges. The challenges of early motherhood resolve slowly over time, when infants start to sleep through the night, or when children start school, or perhaps even when they leave home. When considering the cumulative effects of **multiparity**, the challenges of early motherhood becomes more intense by the overlapping needs of infants born close together. Likewise, the experiences of early motherhood may be extended by children born further apart. The reality is that we do not know how long this stage of motherhood lasts, but the enduring environmental challenge of motherhood may represent a learning environment that is sustained for two or more decades of an individual's life.

Whilst mothers may build resilience over time, and sleep and social support may increase as the child develops, the environmental complexity of motherhood never fully returns to pre-child levels. As children develop, their needs change, requiring continuous behavioral adaptations from mothers. For example, the tasks required to care for a fully dependent newborn are very different from those required to care for a highly mobile toddler, or a school-aged child, and different still from those required to care for an adolescent or young adult. In this way, the environmental complexity of motherhood is influenced by the developmental stages of the child (Figure 1), resulting in continual adjustment to an ever-changing environment. Each subsequent child further increases this environmental complexity, requiring simultaneous care across different stages of child development. Additionally, as individual children display different temperaments and elicit distinctive behaviors in their mothers [70], the skills and strategies learned with one child may not generalize to the next, requiring a mother to relearn and dynamically re-evaluate parenting styles.

Environmental enrichment

The preclinical literature suggests that motherhood influences the rodent brain in a manner similar to the influence of an **enriched environment**. Environmental enrichment refers to housing conditions that involve enhanced sensory, cognitive, motor, or social stimulation [71]. Enriched environments stimulate synaptogenesis [72,73], result in heavier brain weights [74], more complex dendritic branching [75], and may provide a protective effect against brain ageing

[76]. Enriched animals also perform better on tasks of learning and memory [74] and show enhanced hippocampal neurogenesis [77,78].

Foundational research suggests that maternal animals show cognitive and neural outcomes akin to enriched environments [79,80]. Environmentally impoverished postpartum rats show greater cortical depth compared with rats in enriched environments [79], suggesting the maternal environment was enriching enough to negate the detrimental effects of an impoverished physical environment. This result was replicated, with maternal rats showing greater mean cortical depths than virgin females across all housing conditions [80]. Enhanced learning and memory, and increased neuroplasticity in maternal rodents relative to virgin females, are widely interpreted as resulting from an enriching maternal environment [81,82]. The association between caregiving experience and enrichment is also present in primate fathers involved in the rearing of offspring. Paternal marmosets experience similar brain changes to animals living in enriched environments and this effect is mediated by the amount of father–infant contact [83].

Taken together, these studies demonstrate that reproductive experience confers neural and cognitive benefits similar to an environmental enrichment, suggesting that maternal experience may be stimulating and protective for brain health. We suggest that this may extend to human parenthood. Compared with laboratory rodents, humans live vastly more complex lives and arguably already live in highly ‘enriched’ environments. In the same way that reproductive experience enriches the ‘housing conditions’ of rodents, human parenthood increases daily sensory, cognitive, social, and environmental complexity, though perhaps to a lesser extent. Two major elements of an enriched environment are complexity and novelty [71], which are both increased in the human caregiving environment, where new mothers are faced with novel child-related tasks and behaviors.

Cognitive reserve

Environmental enrichment is primarily described in animal models; in humans, a related concept is cognitive reserve [84]. Cognitive reserve refers to the brain’s resilience to damage, illness, or cognitive decline by recruiting pre-existing cognitive processes [85]. The ability to flexibly recruit cognitive processes contributes to maintained function in the face of pathology and the ageing process [85]. For example, in healthy ageing, individuals with high cognitive reserve experience slower decline in memory, executive function, and language skills [86,87]. Cognitive reserve is increased in people exposed to challenges and complex environments. Higher levels of education [88], occupational attainment and complexity [89,90], being more socially active [91], engaging in cognitively demanding hobbies [92], and learning a foreign language [93] are all related to increased cognitive reserve in late life. We suggest that motherhood comparably exerts environmental complexity across the lifespan. Consider the parallels with occupational complexity: if the type of job a person worked across their lifespan contributes to their cognitive reserve in late life, then we would expect that motherhood, which provides novelty and complexity, requires a similar time commitment and lasts for decades, would similarly increase cognitive reserve. In fact, the idea that parenthood adds to cognitive reserve has already been acknowledged in the cognitive reserve literature, albeit indirectly [94]. The Cognitive Reserve Index Questionnaire (CRIq) is a standardized measure of the cognitive reserve accumulated by an individual across their lifespan, based on their educational attainment, working activity, and leisure time. Individuals with more children, or more frequent caregiving responsibilities (for children or the elderly) are allocated a higher score on the CRIq, reflecting the impact of these activities on cognitive reserve [94]. In this way, the very same cognitive load that poses a challenge in early motherhood may be beneficial in the long-term, by exerting sustained environmental complexity across the lifespan.

Motherhood and cognition across the lifespan

The positive association between reproductive experience and neurocognitive improvements is well documented and widely accepted in rodents. Maternal rodents show improved spatial learning and memory in mid-life, reduced hippocampal amyloid deposits, and attenuated memory decline in late life [40,41,43–45,81]. The understanding that reproductive experience is beneficial for long-term cognition and brain health in rodents is uncontroversial, with hormonal and environmental changes that interact to produce a maternal brain that is healthier, more flexible, and more resistant to age-related decline [40,43].

By contrast, the long-term association between cognitive performance and motherhood is less clear and understudied in humans. In older women, having fewer or no children is associated with better cognition in some studies [95,96], but not in others [97,98]. There also appears to be a distinction between studies examining biological and social determinants of motherhood and their relation to cognition. For example, some studies focus on biological factors such as age at first/last birth, breastfeeding duration, and other proxies for lifetime exposure to endogenous estrogens, whereas others focus on **parity**, encompassing the social exposure to children and the caregiving environment. Among parous women, younger age at first pregnancy is associated with worse cognition in late life [98] and later age at first and last pregnancy is associated with improved cognition in late life [99]. However, it is also important to recognize these biological associations in the context of broader social factors. For example, older age at first pregnancy is associated with higher socioeconomic status, income, educational attainment, and more participation in the labor force, factors that are all related to higher cognitive performance throughout the lifespan and greater cognitive reserve in late life [94].

Compared with these biologically focused studies, a growing body of research examining parity suggests that motherhood is related to improved cognition in middle [97,99–101] and late life [102]. One study demonstrated this distinction in a sample of mid-life women ($n = 326$, age = 56.7 ± 2.5 years), showing a positive association between parity and improved verbal memory performance [97]. By contrast, memory performance was not related to lifetime estrogen exposure, including menopausal status, use of hormonal replacement therapy, and reproductive period. As such, it appears that the biosocial influence of the caregiving environment impacts long-term maternal memory across the lifespan, rather than solely the biological exposure to estrogens [97]. Furthermore, it appears that the positive association between parity and cognition is nonlinear: in a large sample of mid-life women ($n = 6123$, $\text{mean}_{\text{age}} = 55.0$ years) and men ($n = 5110$, $\text{mean}_{\text{age}} = 54.7$ years), parity and cognition showed a U-shaped association, where both lower parity and grand multiparity (more than five children) were associated with worse cognitive performance and optimal performance was observed in mothers and fathers with two to three children [99]. The association between grand multiparity and poorer cognition was largely accounted for by socioeconomic status, whereas the association between childlessness and poorer cognition was strengthened when controlling for socioeconomic status.

In another large sample of mid-life women ($n = 160\,077$, age = 56.7 ± 7.9 years) and men ($n = 143\,119$, age = 57.5 ± 8.1 years), higher parity was again associated with enhanced cognitive performance for both mothers and fathers [101]. Mothers and fathers with more children showed improved visual memory and processing speed. In both of these studies, cognitive improvements with parity were seen in parents of both sexes, with stronger effects detected in fathers [101]. Since males do not experience the same physiological changes that birth-giving parents do, these results indicate that the environmental changes of parenthood are important in the association between parity and cognition, at least in mid-life. In the only study to date in late-life mothers ($n = 235$, age = 73.86 ± 3.50 years), we found that parity was positively associated

with cognition, such that mothers with more children performed better on a task of verbal memory [102]. Consistent with this result, higher parity was also positively associated with the thickness of the parahippocampal gyrus, a brain region associated with memory performance.

In addition to cognition in healthy ageing, motherhood also shows a complex relationship with Alzheimer's disease (AD), with many inconsistencies in the literature [100,103]. Increased parity is associated with more severe AD pathology [104] and earlier AD onset [105], but not in all studies [106]. Interestingly, dementia risk also shows a U-shaped association with parity for women and men [106], with the lowest risk in those with two children. Apolipoprotein E (APOE) $\epsilon 4$ allele is a major genetic risk factor for AD, which interacts with parity to influence age of AD onset [107,108]. Compared with women without an APOE- $\epsilon 4$ allele, women with one $\epsilon 4$ allele had on average one more child and those with two $\epsilon 4$ alleles had 3.5 more children [109]. It is also possible that the association between parity and AD is influenced by fertility: not that having more children increases the risk of AD, but that those who are most at risk (APOE- $\epsilon 4$ carriers) are able to have more children. Taken together, genotype, parity, and lifetime estrogen exposure may interact to affect health later in life and should be taken into account in future studies.

The consistent U-shaped associations between parity and cognition, dementia risk, and brain structure may represent the myriad of social factors involved in parenthood, including the impact of high parity on financial pressures and increased stress [106]. Evidence from maternal rodents suggests that the beneficial effect of motherhood on hippocampal function and memory performance are abolished in maternal rats placed under high stress [45], suggesting that motherhood may only be enriching under optimal conditions. Furthermore, when interpreting findings from these large datasets it is important to note that the majority of participants in these samples have two to three children. Therefore, the confidence in predictions from the tails of these distributions is impacted by complex sociodemographic factors and the reliability of statistical estimates themselves. Furthermore, we must also consider the potential factors causing people to not have children, including the influence of genetic or other biological factors influencing fertility. In other words, the U-shaped distribution in cognitive performance and dementia risk is difficult to interpret until more richly phenotyped and representative samples are collected and/or made available.

Parity and brain changes across the lifespan

Recent evidence suggests that motherhood confers life-long changes to the structure of the human brain. Four studies of brain age have explored grey matter differences in middle-aged mothers [101,110,111] and fathers [101] and white matter differences in middle-aged mothers [112]. Brain age is a metric derived from MRI brain scans [113], using machine learning to measure deviations from normative ageing trajectories. The difference between chronological age and estimated age, based on brain structure, is considered a promising biomarker for accelerated ageing, AD, and cognitive impairment [113].

In middle age, mothers with more children show 'younger-looking' brain structure, suggesting a neuroprotective effect of motherhood [110], specifically in striatal and limbic regions [111]. These circuits are involved in reward processing and reinforcement learning, crucial for maternal behaviors in rodents [114,115] and humans [1]. Mothers also show a negative association between hippocampal brain age and parity [111]. This result is consistent with grey matter changes in the parahippocampal gyrus during pregnancy [1] and the postpartum period [52]. The only study of late-life parental brain structure [102] also found a positive association between parity and cortical thickness in the parahippocampal gyrus of elderly mothers. Rodent mothers show enhanced

hippocampal neurogenesis in middle age in parous relative to nulliparous rats [116] and fewer amyloid deposits in the hippocampus of **multiparous** relative to **primiparous** and virgin animals [43,44]. Due to its correlation with memory function and dementia risk [103], hippocampal volume is often used as a proxy for predicting brain health, suggesting parity may have a similarly beneficial impact on brain health in mid- and late-life mothers. Mothers to more children also show ‘younger’ white matter brain age [100] in the corpus colosum, consistent with increased myelination observed in healthy pregnant rats [117].

In the only study of late-life maternal brain function, patterns of brain activity were compared with three models of age-related decline, to test the hypothesis that motherhood confers functional neuroprotection on the late-life maternal brain [118]. For mothers with more children, patterns of functional connectivity related to parity were in the opposite direction to those usually associated with age-related cognitive decline, suggesting that motherhood may be beneficial for brain function in late life [118]. These results are the first indication that the challenges and complexity of the parenting environment may contribute to a mother’s cognitive reserve across the lifespan [85]. Future research is needed to determine how the changes of motherhood endure throughout the lifespan and impact ageing trajectories.

Concluding remarks

The rapid and extreme hormonal and environmental changes of pregnancy mark the transition to motherhood as a major biosocial life event, representing a sensitive neurocognitive developmental period: matrescence. If matrescence is framed as a sensitive neurodevelopmental period, many new questions emerge, including how this period influences the rest of a person’s life (see [Outstanding questions](#)). The number and timing of pregnancies a person has is influenced to some degree by biology and further influenced by sociodemographic factors, including socioeconomic status, cultural norms, and access to contraception. As such, parenthood is an ‘optional’ life stage which, due to choice, biology, and circumstance, does not occur for all people. We must be careful not to frame those without children as having ‘missed’ a developmental stage. However, it is also important to consider that the late-life parent is the most common form of late-life person and that our understanding of normative ageing trajectories is based on samples where elderly parents comprise the vast majority. A lack of understanding of how motherhood impacts the ageing process therefore also has consequences for the life-long health and wellbeing of those who are not parents.

Here, we outline a framework for understanding maternal neurocognition across the lifespan. Motherhood involves increased cognitive load, with novel tasks and responsibilities, requiring continuous behavioral adaptation. The increased cognitive load across the peripartum period provides an initial challenge, requires continuous cognitive adaptation, and results in life-long environmental complexity and increased cognitive reserve in late life. Combining evidence from animal and human studies, we propose that the increased lifetime complexity of motherhood may provide a form of enriched environment, positively contributing to cognitive reserve and resilience to the ageing process.

Declaration of interests

No interests are declared.

References

1. Hoekzema, E. *et al.* (2017) Pregnancy leads to long-lasting changes in human brain structure. *Nat. Neurosci.* 20, 287–296
2. Feldman, R. (2015) The adaptive human parental brain: implications for children’s social development. *Trends Neurosci.* 38, 387–399
3. Davies, S.J. *et al.* (2018) Cognitive impairment during pregnancy: a meta-analysis. *Med. J. Aust.* 208, 35–40
4. Martínez-García, M. *et al.* (2021) Characterizing the brain structural adaptations across the motherhood transition. *Front. Glob. Womens Health* 2, 742775

Outstanding questions

What is the impact of parenthood across the lifespan? How does the experience of pregnancy and/or caregiving interact with subsequent life stages and the hormonal transitions of menopause? Does reproductive and/or caregiving experience alter ageing trajectories? What are the impacts of multiparity and pregnancy timings? How does maternal neurocognitive development interact with the simultaneous stages of child development? What are the impacts of grandparenthood and caregiving responsibilities in late life?

How can environmental and hormonal mechanisms be disentangled? Studies can be devised that include fathers and nonbirthing parents, as well as people who have experienced pregnancy but do not parent a child (in the case of surrogacy, infant loss, or infants placed for adoption). This would allow the mechanistic understanding of the relative contributions of the hormones of pregnancy and the caregiving environment.

What are appropriate control groups? Many studies of cognition in the peripartum period consist of women who are not currently pregnant but have experienced a previous pregnancy. Given the long-term and cumulative changes that motherhood bestows on cognition in rodents, and humans, a control group consisting of women who have never previously been pregnant is critical to achieving reliable comparisons and meaningful results.

What are the critical timepoints that need investigation? The current literature contains many missing timepoints that are crucial if we are to chart neural and cognitive trajectories across the lifespan. Specifically, the field lacks an understanding of the mid-life effects of motherhood (Figure 1). Almost all studies of maternal cognition focus on pregnant and postpartum mothers. Longitudinal studies targeting parents of toddlers, school-aged children, adolescents, and young adults who live at home are required to fill these knowledge gaps.

5. Dahan, O. (2021) The birthing brain: a lacuna in neuroscience. *Brain Cognit.* 150, 105722
6. Luders, E. et al. (2022) The neuroanatomy of pregnancy and postpartum. *NeuroImage* 263, 119646
7. Cardenas, E.F. et al. (2019) Neurobiological changes during the peripartum period: implications for health and behavior. *Soc. Cogn. Affect. Neurosci.* 15, 1097–1110
8. Pawluski, J.L. et al. (2021) Less can be more: fine tuning the maternal brain. *Neurosci. Biobehav. Rev.* 133, 104475
9. Barba-Müller, E. et al. (2018) Brain plasticity in pregnancy and the postpartum period: links to maternal caregiving and mental health. *Arch. Womens Ment. Health* 22, 289–299
10. Camona, S. et al. (2019) Pregnancy and adolescence entail similar neuroanatomical adaptations: a comparative analysis of cerebral morphometric changes. *Hum. Brain Mapp.* 40, 2143–2152
11. Callaghan, B. et al. (2021) Evidence for cognitive plasticity during pregnancy via enhanced learning and memory. *Memory* 30, 519–536
12. Orchard, E.R. et al. (2022) Evidence of subjective, but not objective, cognitive deficit in new mothers at 1-year postpartum. *J. Women's Health (Larchmt)* 31, 1087–1096
13. Parsons, C.E. and Redman, S. (1991) Self-reported cognitive change during pregnancy. *Aust. J. Adv. Nurs.* 9, 20–29
14. Crawley, R. (2002) Self-perception of cognitive changes during pregnancy and the early postpartum: salience and attentional effects. *Appl. Cogn. Psychol.* 16, 617–633
15. Brindle, P.M. et al. (1991) Objective and subjective memory impairment in pregnancy. *Psychol. Med.* 21, 647–653
16. Sharp, K. et al. (1993) Memory loss during pregnancy. *Br. J. Obstet. Gynaecol.* 100, 209–215
17. Crawley, R. et al. (2003) Cognition in pregnancy and the first year post-partum. *Psychol. Psychother.* 76, 69–84
18. Casey, P. et al. (1999) Memory in pregnancy. II: Implicit, incidental, explicit, semantic, short-term, working and prospective memory in primigravid, multigravid and postpartum women. *J. Psychosom. Obstet. Gynecol.* 20, 158–164
19. Janes, C. et al. (1999) Memory in pregnancy. I: Subjective experiences and objective assessment of implicit, explicit and working memory in primigravid and primiparous women. *J. Psychosom. Obstet. Gynaecol.* 20, 80–87
20. Anderson, M.V. and Rutherford, M. (2012) Cognitive reorganization during pregnancy and the postpartum period: an evolutionary perspective. *Evol. Psychol.* 10 147470491201000402
21. Henry, J. and Rendell, P.G. (2007) A review of the impact of pregnancy on memory function. *J. Clin. Exp. Neuropsychol.* 29, 793–803
22. Galea, L.A. et al. (2000) Spatial working memory and hippocampal size across pregnancy in rats. *Horm. Behav.* 37, 86–95
23. Pawluski, J.L. et al. (2016) Neuroplasticity in the maternal hippocampus: relation to cognition and effects of repeated stress. *Horm. Behav.* 77, 86–97
24. Darnaudéry, M. et al. (2007) Early motherhood in rats is associated with a modification of hippocampal function. *Psychoneuroendocrinology* 32, 803–812
25. Macbeth, A.H. and Luine, V.N. (2010) Changes in anxiety and cognition due to reproductive experience: a review of data from rodent and human mothers. *Neurosci. Biobehav. Rev.* 34, 452–467
26. Logan, D.M. et al. (2014) How do memory and attention change with pregnancy and childbirth? A controlled longitudinal examination of neuropsychological functioning in pregnant and postpartum women. *J. Clin. Exp. Neuropsychol.* 36, 528–539
27. Glynn, L.M. (2010) Giving birth to a new brain: hormone exposures of pregnancy influence human memory. *Psychoneuroendocrinology* 35, 1148–1155
28. Harris, N.D. et al. (1996) Peripartur cognitive impairment: secondary to depression? *Br. J. Health Psychol.* 1, 127–136
29. Casey, P. (2000) A longitudinal study of cognitive performance during pregnancy and new motherhood. *Arch. Women's Mental Health* 3, 65–76
30. Eidelman, A. et al. (1993) Cognitive deficits in women after childbirth. *Obstet. Gynecol.* 81, 764
31. Swain, A.M. et al. (1997) A prospective study of sleep, mood, and cognitive function in postpartum and nonpostpartum women. *Obstet. Gynecol.* 90, 381–386
32. Christensen, H. et al. (2010) Cognition in pregnancy and motherhood: prospective cohort study. *Br. J. Psychiatry* 196, 126–132
33. Keenan, P. et al. (1998) Explicit memory in pregnant women. *Am. J. Obstet. Gynecol.* 179, 731–737
34. Mickes, L. et al. (2009) The effects of pregnancy on memory: recall is worse but recognition is not. *J. Clin. Exp. Neuropsychol.* 31, 754–761
35. Rendell, P.G. and Henry, J.D. (2008) Prospective-memory functioning is affected during pregnancy and postpartum. *J. Clin. Exp. Neuropsychol.* 30, 913–919
36. Rutherford, M. and Anderson, M.V. (2020) Changes in intelligence across pregnancy and the postpartum period. *Human Ethol.* 35, 91–105
37. Stark, M.A. (2000) Is it difficult to concentrate during the 3rd trimester and postpartum? *J. Obstet. Gynecol. Neonatal Nurs.* 29, 378–389
38. Henry, J. and Sherwin, B.B. (2012) Hormones and cognitive functioning during late pregnancy and postpartum: a longitudinal study. *Behav. Neurosci.* 126, 73
39. de Groot, R.H. et al. (2006) Differences in cognitive performance during pregnancy and early motherhood. *Psychol. Med.* 36, 1023–1032
40. Kinsley, C.H. et al. (1999) Motherhood improves learning and memory. *Nature* 402, 137–138
41. Macbeth, A.H. et al. (2008) Pregnant rats show enhanced spatial memory, decreased anxiety, and altered levels of monoaminergic neurotransmitters. *Brain Res.* 1241, 136–147
42. Pawluski, J.L. et al. (2006) First reproductive experience persistently affects spatial reference and working memory in the mother and these effects are not due to pregnancy or 'mothering' alone. *Behav. Brain Res.* 175, 157–165
43. Gatewood, J.D. et al. (2005) Motherhood mitigates aging-related decrements in learning and memory and positively affects brain aging in the rat. *Brain Res. Bull.* 66, 91–98
44. Love, G. et al. (2005) Maternal experience produces long-lasting behavioral modifications in the rat. *Behav. Neurosci.* 119, 1084
45. Lemaire, V. et al. (2006) Motherhood-induced memory improvement persists across lifespan in rats but is abolished by a gestational stress. *Eur. J. Neurosci.* 23, 3368–3374
46. Fleming, A.S. et al. (1994) Olfactory-based social learning varies as a function of parity in female rats. *Psychobiology* 22, 37–43
47. Wartella, J. et al. (2003) Single or multiple reproductive experiences attenuate neurobehavioral stress and fear responses in the female rat. *Physiol. Behav.* 79, 373–381
48. Byrnes, E.M. and Bridges, R.S. (2006) Reproductive experience alters anxiety-like behavior in the female rat. *Horm. Behav.* 50, 70–76
49. Farrar, D. et al. (2014) Assessment of cognitive function across pregnancy using CANTAB: a longitudinal study. *Brain Cogn.* 84, 76–84
50. Buckwalter, J.G. et al. (2001) Pregnancy and postpartum: changes in cognition and mood. *Prog. Brain Res.* 133, 303–319
51. Pawluski, J. and Galea, L. (2007) Reproductive experience alters hippocampal neurogenesis during the postpartum period in the dam. *Neuroscience* 149, 53–67
52. Kim, P. et al. (2010) The plasticity of human maternal brain: longitudinal changes in brain anatomy during the early postpartum period. *Behav. Neurosci.* 124, 695–700
53. Moses-Kolko, E.L. et al. (2021) Reduced postpartum hippocampal volume is associated with positive mother-infant caregiving behavior. *J. Affect. Disord.* 281, 297–302
54. Silber, M. et al. (1990) Temporary peripartur impairment in memory and attention and its possible relation to oxytocin concentration. *Life Sci.* 47, 57–65
55. Holder, M.K. and Blaustein, J.D. (2014) Puberty and adolescence as a time of vulnerability to stressors that alter neurobehavioral processes. *Front. Neuroendocrinol.* 35, 89–110
56. Parsons et al. (2004) Pregnancy history and cognition during and after pregnancy. *Int. J. Neurosci.* 114, 1099–1110
57. Buckwalter, J.G. et al. (1999) Pregnancy, the postpartum, and steroid hormones: effects on cognition and mood. *Psychoneuroendocrinology* 24, 69–84

58. Winnicott, D.W. (1956) Primary maternal preoccupation. In *The Maternal Lineage: Identification, Desire, and Transgenerational Issues* (Mariotti, P., ed.), pp. 59–66, Routledge
59. Christensen, H. *et al.* (1999) Pregnancy may confer a selective cognitive advantage. *J. Reprod. Infant Psychol.* 17, 7–25
60. Cutler, C. *et al.* (2011) Everyday life memory deficits in pregnant women. *Can. J. Exp. Psychol.* 65, 27–37
61. Matthews, K.A. and Rodin, J. (1992) Pregnancy alters blood pressure responses to psychological and physical challenge. *Psychophysiology* 29, 232–240
62. Pownall, M. *et al.* (2021) The effects of activating a “baby brain” stereotype on pregnant women’s cognitive functioning. *J. Appl. Soc. Psychol.* 51, 809–824
63. Rutherford, H.J. *et al.* (2015) Emotion regulation in parenthood. *Dev. Rev.* 36, 1–14
64. Rutherford, H.J.V. *et al.* (2018) Executive functioning predicts reflective functioning in mothers. *J. Child Fam. Stud.* 27, 944–952
65. Rutherford, H.J. *et al.* (2015) Investigating the association between parental reflective functioning and distress tolerance in motherhood. *Infant Behav. Dev.* 40, 54–63
66. Miller, V. *et al.* (2020) Assessment of attention in biological mothers using the attention network test-revised. *Curr. Psychol.* 41, 3418–3427
67. Stern, Y. (2005) Brain networks associated with cognitive reserve in healthy young and old adults. *Cereb. Cortex* 15, 394–402
68. Bak, Y. *et al.* (2020) Altered neural substrates within cognitive networks of postpartum women during working memory process and resting-state. *Sci. Rep.* 10, 1–12
69. Zheng, J.-X. *et al.* (2020) Disruption within brain default mode network in postpartum women without depression. *Medicine* 99, e20045
70. Ganiban, J.M. *et al.* (2011) Understanding child-based effects on parenting: temperament as a moderator of genetic and environmental contributions to parenting. *Dev. Psychol.* 47, 676
71. Nithianantharajah, J. and Hannan, A.J. (2006) Enriched environments, experience-dependent plasticity and disorders of the nervous system. *Nat. Rev. Neurosci.* 7, 697–709
72. Diamond, M.C. (1988) *Enriching Heredity: The Impact of the Environment on the Anatomy of the Brain*, Free Press
73. Diamond, M.C. *et al.* (1964) The effects of an enriched environment on the histology of the rat cerebral cortex. *J. Comp. Neurol.* 123, 111–119
74. Cummins, R. *et al.* (1973) Environmentally-induced changes in the brains of elderly rats. *Nature* 243, 516–518
75. Volkmar, F.R. and Greenough, W.T. (1972) Rearing complexity affects branching of dendrites in the visual cortex of the rat. *Science* 176, 1445–1447
76. Speisman, R.B. *et al.* (2013) Environmental enrichment restores neurogenesis and rapid acquisition in aged rats. *Neurobiol. Aging* 34, 263–274
77. Nilsson, M. *et al.* (1999) Enriched environment increases neurogenesis in the adult rat dentate gyrus and improves spatial memory. *J. Neurobiol.* 39, 569–578
78. Kempemann, G. *et al.* (1998) Experience-induced neurogenesis in the senescent dentate gyrus. *J. Neurosci.* 18, 3206–3212
79. Diamond, M.C. *et al.* (1971) Brain plasticity induced by environment and pregnancy. *Int. J. Neurosci.* 2, 171–178
80. Hamilton, W.L. *et al.* (1977) Effects of pregnancy and differential environments on rat cerebral cortical depth. *Behav. Biol.* 19, 333–340
81. Kinsley, C.H. *et al.* (2008) Motherhood induces and maintains behavioral and neural plasticity across the lifespan in the rat. *Arch. Sex. Behav.* 37, 43–56
82. Kinsley, C.H. *et al.* (2011) Reproductive experience may positively adjust the trajectory of senescence. *Curr. Top. Behav. Neurobiol.* 10, 317–345
83. Kozorovitskiy, Y. *et al.* (2006) Fatherhood affects dendritic spines and vasopressin V1a receptors in the primate prefrontal cortex. *Nat. Neurosci.* 9, 1094–1095
84. Nithianantharajah, J. and Hannan, A.J. (2009) The neurobiology of brain and cognitive reserve: mental and physical activity as modulators of brain disorders. *Prog. Neurobiol.* 89, 369–382
85. Stern, Y. (2002) What is cognitive reserve? Theory and research application of the reserve concept. *J. Int. Neuropsychol. Soc.* 8, 448–460
86. Manly, J.J. *et al.* (2003) Literacy and memory decline among ethnically diverse elders. *J. Clin. Exp. Neuropsychol.* 25, 680–690
87. Stern, Y. (2009) Cognitive reserve. *Neuropsychologia* 47, 2015–2028
88. Meng, X. and D’arcy, C. (2012) Education and dementia in the context of the cognitive reserve hypothesis: a systematic review with meta-analyses and qualitative analyses. *PLoS One* 7, e38268
89. Boots, E.A. *et al.* (2015) Occupational complexity and cognitive reserve in a middle-aged cohort at risk for Alzheimer’s disease. *Arch. Clin. Neuropsychol.* 30, 634–642
90. Dekhtyar, S. *et al.* (2015) A life-course study of cognitive reserve in dementia—from childhood to old age. *Am. J. Geriatr. Psychiatry* 23, 885–896
91. Evans, I.E. *et al.* (2018) Social isolation, cognitive reserve, and cognition in healthy older people. *PLoS One* 13, e0201008
92. Marioni, R.E. *et al.* (2012) Active cognitive lifestyle associates with cognitive recovery and a reduced risk of cognitive decline. *J. Alzheimers Dis.* 28, 223–230
93. Bialystok, E. (2021) Bilingualism: pathway to cognitive reserve. *Trends Cogn. Sci.* 25, 355–364
94. Nucci, M. *et al.* (2012) Cognitive Reserve Index questionnaire (CRIq): a new instrument for measuring cognitive reserve. *Aging Clin. Exp. Res.* 24, 218–226
95. Heys, M. *et al.* (2011) Life long endogenous estrogen exposure and later adulthood cognitive function in a population of naturally postmenopausal women from Southern China: the Guangzhou Biobank Cohort Study. *Psychoneuroendocrinology* 36, 864–873
96. Smith, C. *et al.* (1999) Lifelong estrogen exposure and cognitive performance in elderly women. *Brain Cogn.* 39, 203–218
97. Henderson, V. *et al.* (2003) Estrogen exposures and memory at midlife: a population-based study of women. *Neurology* 60, 1369–1371
98. Ryan, J. *et al.* (2009) Life-time estrogen exposure and cognitive functioning in later life. *Psychoneuroendocrinology* 34, 287–298
99. Read, S.L. and Grundy, E.M. (2017) Fertility history and cognition in later life. *J. Gerontol. B Psychol. Sci. Soc. Sci.* 72, 1021–1031
100. Harville, E.W. *et al.* (2020) Reproductive history and cognitive aging: the Bogalusa Heart Study. *Am. J. Geriatr. Psychiatry* 28, 217–225
101. Ning, K. *et al.* (2020) Parity is associated with cognitive function and brain age in both females and males. *Sci. Rep.* 10, 6100
102. Orchard, E.R. *et al.* (2020) Relationship between parenthood and cortical thickness in late adulthood. *PLoS One* 15, e0236031
103. Duarte-Guterman, P. *et al.* (2019) The long and short term effects of motherhood on the brain. *Front. Neuroendocrinol.* 53, 100740
104. Colucci, M. *et al.* (2006) The number of pregnancies is a risk factor for Alzheimer’s disease. *Eur. J. Neurol.* 13, 1374–1377
105. Tomasz, S. and Kloszewska, I. (2004) Parity, number of pregnancies, and the age of onset of Alzheimer’s disease. In *7th World Congress of Biological Psychiatry, American Psychiatric Association*
106. Gong, J. *et al.* (2022) Reproductive factors and the risk of incident dementia: a cohort study of UK Biobank participants. *PLoS Med.* 19, e1003955
107. Corbo, R.M. *et al.* (2007) Combined effect of apolipoprotein e genotype and past fertility on age at onset of Alzheimer’s disease in women. *Dement. Geriatr. Cogn. Disord.* 24, 82–85
108. Cui, J. *et al.* (2014) Amyloid precursor protein mutation disrupts reproductive experience-enhanced normal cognitive development in a mouse model of Alzheimer’s disease. *Mol. Neurobiol.* 49, 103–112
109. van Exel, E. *et al.* (2017) Effect of APOE ε4 allele on survival and fertility in an adverse environment. *PLoS One* 12, e0179497
110. de Lange, A.-M.G. *et al.* (2019) Population-based neuroimaging reveals traces of childbirth in the maternal brain. *Proc. Natl. Acad. Sci.* 116, 22341–22346
111. de Lange, A.-M.G. *et al.* (2020) The maternal brain: region-specific patterns of brain aging are traceable decades after childbirth. *Hum. Brain Mapp.* 41, 4718–4729
112. Voldsbekk, I. *et al.* (2021) A history of previous childbirths is linked to women’s white matter brain age in midlife and older age. *Hum. Brain Mapp.* 42, 4372–4386
113. Franke, K. and Gaser, C. (2019) Ten years of brainAGE as a neuroimaging biomarker of brain aging: what insights have we gained? *Front. Neurol.* 10, 789

114. Brunton, P.J. and Russell, J.A. (2008) The expectant brain: adapting for motherhood. *Nat. Rev. Neurosci.* 9, 11–25
115. Numan, M. and Woodside, B. (2010) Maternity: neural mechanisms, motivational processes, and physiological adaptations. *Behav. Neurosci.* 124, 715
116. Eid, R.S. *et al.* (2019) Early and late effects of maternal experience on hippocampal neurogenesis, microglia, and the circulating cytokine milieu. *Neurobiol. Aging* 78, 1–17
117. Gregg, C. *et al.* (2007) White matter plasticity and enhanced remyelination in the maternal CNS. *J. Neurosci.* 27, 1812–1823
118. Orchard, E.R. *et al.* (2021) Neuroprotective effects of motherhood on brain function in late life: a resting-state fMRI study. *Cereb. Cortex* 31, 1270–1283
119. Almanza-Sepulveda, M.L. *et al.* (2018) Executive function in teen and adult women: association with maternal status and early adversity. *Dev. Psychobiol.* 60, 849–861
120. Raphael, D. (1973) *The Tender Gift: Breastfeeding*, Prentice-Hall
121. Stolzenberg, D.S. and Champagne, F.A. (2016) Hormonal and non-hormonal bases of maternal behavior: the role of experience and epigenetic mechanisms. *Horm. Behav.* 77, 204–210
122. Bick, J. *et al.* (2013) Foster mother-infant bonding: associations between foster mothers' oxytocin production, electrophysiological brain activity, feelings of commitment, and caregiving quality. *Child Dev.* 84, 826–840
123. Burt, D.B. *et al.* (1995) Depression and memory impairment: a meta-analysis of the association, its pattern, and specificity. *Psychol. Bull.* 117, 285
124. Kahn, R.L. *et al.* (1975) Memory complaint and impairment in the aged: the effect of depression and altered brain function. *Arch. Gen. Psychiatry* 32, 1569–1573
125. Schweizer, S. *et al.* (2018) Symptoms of depression in a large healthy population cohort are related to subjective memory complaints and memory performance in negative contexts. *Psychol. Med.* 48, 104–114
126. Maquet, P. (2001) The role of sleep in learning and memory. *Science* 294, 1048–1052
127. Walker, M.P. and Stickgold, R. (2004) Sleep-dependent learning and memory consolidation. *Neuron* 44, 121–133
128. Onyper, S.V. *et al.* (2010) Executive functioning and general cognitive ability in pregnant women and matched controls. *J. Clin. Exp. Neuropsychol.* 32, 986–995
129. Ouellette, S.J. and Hampson, E. (2019) Memory and affective changes during the antepartum: a narrative review and integrative hypothesis. *J. Clin. Exp. Neuropsychol.* 41, 87–107
130. Pieters, S. *et al.* (2021) Working memory from pregnancy to postpartum: do women really change? *Psychoneuroendocrinology* 126, 105169
131. Abraham, E. *et al.* (2014) Father's brain is sensitive to childcare experiences. *Proc. Natl. Acad. Sci. U. S. A.* 111, 9792–9797
132. Kim, P. *et al.* (2014) Neural plasticity in fathers of human infants. *Soc. Neurosci.* 9, 522–535
133. Martínez-García, M. *et al.* (2022) First-time fathers show longitudinal gray matter cortical volume reductions: evidence from two international samples. *Cereb. Cortex* Published online September 4, 2022. <https://10.1093/cercor/bhac333>
134. Paternina-Die, M. *et al.* (2020) The paternal transition entails neuroanatomic adaptations that are associated with the father's brain response to his infant cues. *Cereb. Cortex Commun.* 1, tga082
135. Everette, A. *et al.* (2007) *Paternal Experience Enhances Behavioral and Neurobiological Responsivity Associated with Affiliative and Nurturing Responses*, International Behavioral Neuroscience Society
136. Lambert, K. *et al.* (2005) Pup exposure differentially enhances foraging ability in primiparous and nulliparous rats. *Physiol. Behav.* 84, 799–806
137. Sobral, M. *et al.* (2022) Neurobiological correlates of fatherhood during the postpartum period: a scoping review. *Front. Psychol.* 13, 745767
138. Gasper, E. *et al.* (2019) More than just mothers: the neurobiological and neuroendocrine underpinnings of allomaternal caregiving. *Front. Neuroendocrinol.* 53, 100741
139. Saltzman, W. and Ziegler, T.E. (2014) Functional significance of hormonal changes in mammalian fathers. *J. Neuroendocrinol.* 26, 685–696
140. Orchard, E.R. *et al.* (2022) The maternal brain is more flexible and responsive at rest: effective connectivity of the parental caregiving network in postpartum mothers. *bioRxiv* Published online September 28, 2022. <https://dx.doi.org/10.1101/2022.09.26.509524>